



The Arlington Forester

Vol. 66, Number 2

Arlington, Virginia

October 2024

Virtual AFCA Meeting—Arlington’s Deer Management Program/Native Plants and Insects

AFCA invites you to join our monthly Zoom meeting on Wednesday, October 16, at 7 p.m. A county representative will outline Arlington’s new Deer Management Program and describe the findings that led up to it (see the article on page 3); by attending the meeting, you will find out more about what the county has planned. In addition, Arlington master gardeners will speak about native plants and insects in our area and offer fall gardening tips.

To join the meeting, enter the following URL into your browser between 6:50 and 7 p.m. on Wednesday, October 16: <https://tinyurl.com/yckdzp5t>. (If you have never used Zoom, you can view a short tutorial at <https://zoom.us/resources> by clicking on Joining & Configuring Audio/Video.) Alternatively, you can dial in to the meeting at 301-715-8592, where you will be prompted to enter meeting number 816 5354 1733 and passcode 469609. You might also be prompted to hit the # sign one or more times. This call-in number will be active starting at 6:50 p.m.

How Do AFCA Dues Benefit You?

Your annual AFCA dues help get this newsletter delivered to your door as a service to you and the entire neighborhood, with information on trees and parks, trails and bridges, the Lubber Run Amphitheater, traffic and pedestrian safety, and more. Dues pay for our annual picnic and holiday party and for donations to our neighborhood schools. Dues also support the AFCA website (www.arlingtonforestva.org), which contains a detailed neighborhood map, a history of Arlington Forest, back issues of this newsletter, and more. Please pay your dues promptly this year.

AFCA September Meeting

On September 18, AFCA opened the 2024-25 year with a Zoom meeting. Newly elected AFCA President Sal D’Itri chaired the meeting with about 17 households represented. After a useful presentation and discussion led by AFCA Treasurer Jeff Horwitz, AFCA’s annual budget was approved by voice vote. AFCA represents our community before the Arlington County Board and other county entities on many issues of concern to us, including traffic, safety, and schools issues. Jeff noted the possibility that we might need to reduce or eliminate

...continued on page 2

AFCA MEMBERSHIP DUES ANNUAL DUES \$20 PER HOUSEHOLD

Deliver this form and your check payable to AFCA to your respective AFCA section representative:

Greenbrier: Tom Smialowicz, 26 N. Granada St. 22203
Northside: Liz Grossman, 128 N. Columbus St. 22203
Southside: Julie Kirchhoff, 4828 Arlington Blvd. 22204

Dues: _____ Donation: _____ Total: _____

NAME: _____

ADDRESS: _____

EMAIL: _____

AFCA Virtual Meeting 7 p.m. **October 16** Through Zoom

The Team

Editor/Advertising: Hutch Brown
703-855-1732, newsletter@arlingtonforestva.org
Check your ad and contact Hutch for any corrections.

Layout & Design: Leo Horwitz
newsletter@leohorwitz.com

Distribution: Allison Kennett
allison.kennett@gmail.com

Contact Allison if you do not receive a newsletter.

The Arlington Forester is the official publication of the Arlington Forest Citizens Association, Arlington, VA. A nonpartisan, nonsectarian publication serving the residents of Arlington Forest, the *Forester* welcomes articles and photos focusing on issues specific to our neighborhood. We publish monthly from September to November and January to May. The deadline for submissions is the first of the month. Email your submission of up to 400 words—preferably with a photo—to newsletter@arlingtonforestva.org. Articles on controversial issues are welcome but do not necessarily reflect the views of AFCA and will be marked as opinion.

2024–2025 AFCA Officers

President:
Sal D'Itri
afcaprez@gmail.com

Vice President, Southside:
Julie Kirchoff
ssvpAFCA@gmail.com

Vice President, Greenbrier:
Tom Smialowicz
703-528-3889
tsmialowicz@gmail.com

Vice President, Northside:
Liz Grossman
703-841-0578
grossman.elizabeth@icloud.com

Recording Secretary:
Char Mahoney
571-241-9866
char.mahoney@verizon.net

Corresponding Secretary:
Janet Irwin
703-516-4574
jeirwin1@verizon.net

Treasurer:
Jeffrey Horwitz
703-243-2395
afca@ironstate.me

Arlington Neighborhoods Program:
Liz Kauffman
571-327-6497
lizkauffman@yahoo.com

Arlington Civic Federation Rep:
Eric Lotke
ericlotke2044@gmail.com

Historian:
Todd Burns
trbeyond@gmail.com

Website: www.arlingtonforestva.org
Join AFCA listserv by emailing address to:
arlingtonforestva@gmail.com
The *Forester* is printed by Minuteman Press

budget items if we do not receive enough dues payments from members, so please pay your annual \$20 dues to your AFCA vice president ASAP—or use the PayPal link on the AFCA website!

Sal announced that Todd Burns has stepped up to fill the big shoes of retiring AFCA Historian John Naland. Many thanks to John for his years of service, and a big thanks to Todd for volunteering! Participants discussed the numerous native-plant sales in our area in September/October and the possibility of organizing a neighborhood native-plant exchange and giveaway next spring when new growth emerges. If you would like to get involved, let your AFCA vice president know or contact Sal.

Bev Johnson noted that new 20-mph zones with camera enforcement near schools will soon result in tickets being issued, so please drive safely in these areas. Until now, only warnings have been given while people get used to the change. Bev also said that plans to install a new traffic signal at the intersection of N. George Mason and N. Park Drives are on track, with construction to begin in December.

Sal initiated a discussion for future follow-up on ideas to get neighbors throughout Arlington Forest together to meet new neighbors, build community, and generate more connections between the three sections of Arlington Forest. In that regard, we need volunteers to help organize the annual neighborhood holiday party scheduled for the first weekend in December. If you are able to help, please let Sal or your neighborhood vice president know.

EnviroHomeDesign
Design. Build. Remodeling

ONE OF THE 2013 TOP 100 GREEN LEADERS BY PODER MAGAZINE

*Over 20 years of experience
delivering beautiful, healthy and
energy efficient homes*

4822 3rd Street North | Arlington Forest
(703) 812-9370 | www.envirohomedesign.com

Deer Management Project Update

By Hutch Brown

White-tailed deer frequent our local parks and, at times, our own yards. After assessing deer numbers and impacts on our urban forests, Arlington County found that deer, by overbrowsing understory plants, are destroying habitats needed by birds, small mammals, and other wildlife, including deer themselves.

To bring our forest ecosystems back into balance, the county launched a Deer Management Project in 2021, with public feedback sessions beginning in 2023. Last June/July, more than 600 county residents shared feedback online, with 158 people participating in an open house. Online feedback indicated 85% support for actively managing Arlington's deer, with 80% support for a professional sharpshooting program to reduce deer populations to sustainable levels.

Last summer, the Arlington County Board approved a Deer Management Program with professional sharpshooting in some county parks as the primary method of deer population control. The venison will be donated to local food banks. The program will also use fencing and repellents to protect vulnerable plants in some



areas. Periodic deer population surveys using drones will help to assess ongoing deer impacts in our parks. The program will also track vehicle collisions with deer and monitor tick-borne diseases involving deer.

This fall, county staff will propose amendments to the Arlington County Code to permit professional sharpshooting in Arlington County parks. In winter 2025, staff will develop a deer management operations plan. In winter 2026, contracted

professional sharpshooting will begin in some parks, with a focus on public safety and communication. Professional sharpshooters will operate at night while parks are closed, shooting downward from tree stands at short range. Sound suppressors will minimize noise, and special nonlead ammunition will be used. During sharpshooting operations, police and park rangers will monitor parks for public safety. Sharpshooting operations have been carried out nationwide for decades with no reported public injuries. For more information, visit Arlington County Deer Management Program online.

Still the #1 Remodeling Contractor in Arlington

Pulling more permits in Arlington than any other contractor



Specializing in Arlington Homes

GET A FREE QUOTE TODAY
703-536-0900 | CookBros.org

Stormwater Mitigation Planning for Lubber Run

By Hutch Brown

In July 2019, torrential rains from a 100-year storm brought flash floods to Lubber Run. The stream originates in underground pipes near Langston Blvd.; it surfaces in Woodlawn Park near Washington Blvd., then flows mainly aboveground through Waycroft-Woodlawn, Ballston Pond, Bluemont, and Arlington Forest before joining Four Mile Run in Glencarlynn Park. Flooding in 2019 affected homes and yards mainly upstream from Arlington Forest, but floodwaters scoured much of Lubber Run Park, toppling trees and destroying footbridges. In response, county stormwater managers met with residents from across the watershed in August 2019 to discuss measures to mitigate stormwater runoff. Civic associations, including AFCA, formed the Lubber Run Civic Association Watershed Group to continue meeting with the county, which hosted four meetings in 2022-23. A meeting scheduled for April 2024 to further explore concepts for reducing flood risk was postponed. What concepts did the county want to discuss?

According to county plans posted online (see Lubber Run Stormwater Improvements), the county's watershed strategy for Lubber Run involves upgrading the capacity for stormwater intake into underground pipes north and west of Woodlawn Park, including the area near the expanded Virginia Hospital Center, hard hit by the storm. Also proposed is an underground stormwater



detention vault in Woodlawn Park, like the one built under playing fields at Cardinal Elementary School in Westover. The northern part of Woodlawn Park is a similar open grassy area; kids use it for sports and neighbors for walking dogs and enjoying local wildlife and greenery. The vault would hold large amounts of stormwater

runoff and gradually release it into Lubber Run, reducing flooding downstream. Like at Cardinal school, the grassy area would be rebuilt over the vault, with park uses and ecosystem functions restored within a few years. Viable alternative vault sites in this highly developed watershed are few to none.

Taken together, according to the county, the measures in its watershed strategy would control flooding from the kind of storm we see on average every 10 years. Some residents oppose the vault because it would disrupt the grassy part of Woodlawn Park; some call instead for small bioretention projects, such as swales and rain gardens on nearby streets. Whether such relatively small projects could match the vault's capacity for stormwater detention seems doubtful unless combined with a smaller vault project, one that disturbed less green space. In any case, according to the county, flooding from 100-year storms like the one in 2019 would still occur, and climate change could bring storms that are even more frequent and severe.



Tracy C. Taylor, Author

W-L High School Graduate
George Mason University Graduate
DeVry University Graduate
United States Army Veteran
Writer of Adventure Books, Children's Books,
Christian Books, Dental Fiction,
Poetry, and Young Adult Fiction.
Longtime resident of Arlington

Summer's Coming, Get your Books today.



Prince of Pages, Inc.
www.princeofpages.com

Adventure: The Journey
Children's: Small Fry Tales
Christian: 60 Christian Traits
Dental: Toothache at Big Mouth Bend
Poetry: Wondering Ardor
Christian: Parody of Parables
Dental: Cavities of the Caribbean
Dental: Something Wicked in the Land of Ahhhs
Financial: Good Habits to Have (Financial Help Book)

Opinion: Climate Action Requires a Biophilia Strategy for Arlington

The piece is based on a paper by David Howell in April 2024, shortened to fit the newsletter format.

The accumulating effects of climate change will affect all aspects of life and livelihood around the globe through extreme temperatures, severe storms, drought, sea-level rise, habitat loss, and altered biodiversity. Arlington's Community Energy Plan, adopted in 2019, has the goal of reducing carbon emissions to net zero by 2050. However, even if global targets for fossil fuel emissions are met, we will continue to experience the rising impacts of climate change.

Given the challenge, Arlington requires more than just a strategy of reducing carbon emissions. We need a companion strategy of sustaining and improving the quality of place and everyday life. The presence of nature in daily life is necessary for well-being. Humans are genetically programmed to respond positively to natural sights, sounds, smells, and tactile sensations. Known as biophilia, this human trait translates into physical, mental, and emotional responses that help restore, refresh, ease anxiety, bring focus, and just make us feel good. A nature-based strategy would foster a healthy environment and balanced native ecology, invest in natural capital as a community asset, take biophilic approaches to land use and development, and use nature to mitigate the impacts of climate change.

In 2019, the Arlington County Board adopted a Biophilic City Resolution committing the county to

prioritizing nature in our public spaces and development and to joining the international Biophilic Cities Network. For Arlington, this commitment to biophilia not only benefits residents directly but also fosters climate change mitigation and adaptation strategies for maintaining and improving livability. Arlington has already incorporated biophilic principles into such plans and policies as the 2020 Green Building Incentive Policy, the 2023 Forestry and Natural Resources Plan, and more. An update of the county's Comprehensive Plan is due in 2024, an opportunity to incorporate climate action parameters into all future plan components.

In tandem with Arlington's ongoing contributions to the global climate response, a nature-based strategy will improve our quality of place and everyday life in an equitable way, with immediate benefits for all. Many cities have already added to their development and environmental policies a priority to promote urban nature and a healthy human habitat. Caring for the Earth and caring for our urban selves is a worthy symbiotic endeavor.

What is Biophilia?

The term "biophilia" was introduced in 1973 by the sociologist Erich Fromm to describe a psychological attraction to all that is alive and vital. The ecologist E.O. Wilson redefined it in 1984 as "the urge to affiliate with other forms of life." Today, it is used to mean a natural human affinity for life or living systems.

*Your home, your investment.
Rely on a professional to help you.*

OMAR S SHERZAI

703-474-1145

Omar@LNF.com

LongandFoster.com/OmarSherzai

*Are you thinking about selling
a home and want to know what
you should do to get it ready?*

*Let me help you find the
changes that will have the most
appeal to buyers. A 30-minute
consultation can help you make
smart decisions. Let's add
VALUE to your home.*



4600 Cherry Hill Road, Arlington, VA 22207
1680 Wisconsin Ave NW, Washington, DC 20007



PTA/PTSA Updates

By Samantha Bell

Barcroft Elementary School

We celebrated the start of the school year with a Back to School Picnic and DJ on September 20. Families either brought their own dinners or bought pizza and snacks for sale by the PTA. Upcoming events include Outdoor Movie Night on October 27 and the Chipotle Restaurant Fundraiser on November 19. You can support the Barcroft PTA by linking your Harris Teeter

card (www.harristeeter.com/together-in-education); the Harris Teeter Barcroft code is 4238, and you need to relink every year. Follow us on X (formerly known as Twitter) and Instagram at @BarcroftEagles and on Facebook at Barcroft Elementary School PTA. You can contact barcroftptapresident2024@gmail.com if you would like to support the PTA or have any questions.

Kenmore Middle School

We had a great turnout for our Family Festival and Bingo Night on September 26, where we also celebrated Hispanic Heritage Month with Bolivian dancers, a demonstration from Chef Carla, and family art stations. Food was provided for families to enjoy before playing Bingo for a chance to win some prizes. Upcoming events include Family Movie Night on October 10 and Cookies and Cocoa in mid-December. You can support the Kenmore PTSA by linking your Harris Teeter card (www.harristeeter.com/together-in-education); the Harris Teeter Kenmore code is 3954, and you need to relink every year. Follow us on X (formerly known as Twitter) at @KenmorePTA or on the PTSA page of the Kenmore Middle School website at <https://kenmore.apsva.us/pta/>. You can contact kenmoreptapresident@gmail.com if you would like to support the PTA or have any questions. Volunteers are always needed! Donations to the PTA are always appreciated at <https://kenmorepta.memberhub.com/store>.

ARLINGTON



TREE CARE

Maintaining the natural health of your trees

Tree Removal * Pruning Storm Damage

Licensed & Insured

703-524-0888

Call to schedule a free evaluation or estimate for your trees.

www.ArlingtonTreeCare.com



Paul Cachion, MBA

571-216-6802

CachionHomes@gmail.com

The Numbers Can Be Intimidating...

Current 30-year fixed mortgage rate: 7.78%

Avg. Days on Market (Arlington): 26

Active Inventory (Arlington): -24% from a year ago

Average sales price (past 6 months in Arlington Forest): \$1,015,528

...but there is only one number you need to know to be an expert on the market:

571-216-6802

Give a call anytime, and I'll make it all easy to understand.

Your Arlington Forest Realtor...Cachion Homes.



Member Long & Foster Executive Club

Election Primary

On June 18, the Democratic Party held a primary open to all registered Arlington voters for the general election on November 5. Turnout was about 11%. In Arlington's second election with ranked-choice voting, J.D. Spain was elected from a field of five as the Democratic candidate in November for an open seat on the county board. Spain will face Republican Juan Carlos Fierro, independent Audrey Clement, and Forward Party candidate Madison Granger in the general election, which will again be decided by ranked-choice voting. Early voting began on September 20.

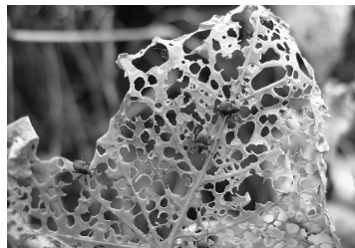
Election Watch

The Office of the Commonwealth's Attorney for Arlington and Falls Church established a task force "to rapidly respond to and investigate any reports of voter intimidation, interference, or fraud" in the national election coming up on November 5. Prosecutors will be on call "to swiftly address any legal issues that may arise at polling places." The measure followed an August 26 training session in Clarendon for Trump organization volunteers to watch for potential voter fraud at the polls. The GOP-led "Protect the Vote" campaign is seeking to recruit 5,000 volunteers in Virginia to "be in the room whenever a vote is cast," with the stated goal of preserving election integrity.

Arlington Recognized for Technology Use

Arlington was named first in the nation among cities/counties overall by the Center for Digital Government for its 2024 Government Experience Awards. Arlington was also 1 of 13 jurisdictions statewide to win a 2024 Commonwealth Technology Award from the Virginia IT Agency. Both awards are in recognition of Arlington's efforts to support our community through the use of technology to ensure open, accessible government for all.

Biocontrol for Mile-a-Minute Vine



Mile-a-minute vine, an invasive weed from Asia, spread to our area after establishing in Pennsylvania in the 1930s-40s. The vine can grow 6 inches per day, overgrowing and killing native plants. Fairfax County released an Asian weevil that feeds only on mile-a-minute vine. The weevil has spread into Arlington, so the county has stopped spraying to control the weed in county parks. The weevil will not eradicate its host but will help to control it.

LONG & FOSTER
REAL ESTATE

CALL FOR A **FREE** NO OBLIGATION MARKET ANALYSIS

**SELLING VIRGINIA
ONE HOME AT A TIME**

202.256.7039

SAMUEL DAVIS

2300 CALVERT STREET • WASHINGTON, DC 20008

O: 202.483.6300 | E: SAMUEL@LNF.COM

W: SAMSELLSDCVAMD.COM



Around the Forest

Sendoff for Esther Bowring



Dozens of Foresters joined former AFCA President Esther Bowring and her husband Larry at 4 p.m. on Sunday, October 15, at the Outback in the Arlington Forest Shopping Center to express their appreciation for Esther's many years of service to our community. Esther cofounded the Lubber Run Amphitheater Foundation in 2011 and helped lead it for 13 years. She served as AFCA co-secretary for 6 years and then as AFCA president from October 2019 until last May. Our neighborhood owes Esther a debt of gratitude, and we joined her to celebrate her accomplishments and thank her for her service.

Invasive Plant Removal Workdays

You can join community volunteers and Arlington Regional Master Naturalists to help keep Lubber Run Park free from plant invaders so our native plants and animals can thrive. Volunteers will meet at the Lubber Run Amphitheater on Sunday, October 13 (10 a.m. to noon), and on Saturday, November 23 (1 to 3 p.m.). Preregistration is required; to volunteer, contact Stephanie Martin at stephmartin60@aol.com.

Southside Footbridge Replaced

In September, county contractors replaced the footbridge connecting Southside with Barcroft about 2 years after the original bridge was destroyed by a falling tree. The new bridge anchors a cut-through path for kids walking to Barcroft Elementary School, teens catching the bus to Wakefield High School, and pedestrians on their way to the W&OD trail. County contractors planned to repave the asphalt path in October. The county is working with Dominion Power to fix a leaning utility pole next to the bridge.

Spotted Lanternflies Are Here



At least one neighbor has found spotted lanternflies in Arlington Forest. Originally from Asia, the lanternfly was first detected in Pennsylvania in 2014; it has since spread to our area, hitchhiking on clothing and vehicles. Lanternflies don't bite or sting but can devastate crops and other vegetation. They feed on more than 70 different plants but prefer ailanthus (tree of heaven), another Asian import. Arlington County is helping to control lanternfly by eliminating ailanthus on public land.



KING'S

TREE & OUTDOOR SERVICE

Honest Experienced and Affordable

NO JOB TOO BIG OR TOO SMALL
Free Estimates • Insured & Bonded

VICTOR REYES

(540) 316-8879

KingsTree2024@gmail.com

Check out our website: KingsTreeOutdoor.com

Around the Forest (cont'd)

Fall Festival—Charitable Event

Alma Gallego, a Northside neighbor, sent news of a Fall Festival on Saturday, November 2 (10 to 2), at Arlington Church of the Brethren, 300 N. Montague St., Arlington. From 10 to 1, you can pet two adorable alpacas and a dwarf goat. Inside will be an extensive craft table and a bake table with lots of homemade goodies. You can enjoy a complimentary cup of coffee, and the Cambodian congregation will be selling their famous egg rolls. Hot dogs will also be on sale. The outreach ministry will have three tables—Heifer International, which helps bring an end to world hunger through donations to purchase farm animals and get agricultural training in more than 125 countries; New Community Project, a small nonprofit organization that focuses on environmental sustainability and social justice; and SEERV, which fights global poverty through fair and ethical trade of handicrafts from artisans around the world.



DA Studio Salon

Your local family hair salon dedicated to making the whole family feel and look great. Let us give you a trim, touch up or add some color to your hair. We take **Customer Service** and **Value** very seriously.

Make an appointment quick & easy - Just go to **DASudioSalon.com** and click **Book an Appointment**

Life isn't perfect but your hair can be.

Arlington Forest Shopping Center
703.525.6828
DAsudiosalon.com
DAsudiosalon@gmail.com

Community Calendar

Next AFCA meeting: Wednesday, October 16, 7 p.m.

Lubber Run Farmers' Market: Saturday mornings at the Barrett Elementary School parking lot.

Election: November 5 (you can register to vote, check your status, or apply to vote by mail at <https://bit.ly/VoteArlington>). On the ballot will be candidates for President, Senate, House of Representatives, Arlington County Board (1 seat), and Arlington School Board (2 seats).

Holiday Party: A Friday in December at the Lubber Run Community Center (tentative)

Neighborhood Spring Cleanup: A Saturday in April 2025

Annual AFCA Picnic: Wednesday, May 21, 2025

Annual Yard Sale: A Saturday in May 2025

Turnaround Day: June 15, 2025 (tentative)

AFCA Meetings

Topics are tentative.

October 16, 2024: Arlington's Deer Management Program/Native plants and insects

November 20, 2024: Arlington's Stormwater Management program

January 15, 2025: Traffic and pedestrian safety

February 19, 2025: Arlington Public Schools

March 19, 2025: Arlington Neighborhoods Program

April 16, 2025: Spring gardening

May 21, 2025: Neighborhood picnic

Repair

Posts

Remount

Rails



Ray's Welding
(703) 960-1571

www.BenRayWelding.com

Rails Installed New



Need your house or office cleaned?
Call Marlene (703) 402-8792 for a free estimate

- ✔ Windows
- ✔ Appliances
- ✔ Laundry
- ✔ General Cleaning
- ... And more.

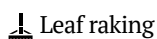
◆◆ Once, or weekly, or other intervals
We have been working in Arlington Forest for more than 20 years and can provide references.

Kids for Hire

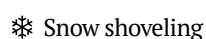
These Arlington Forest youths are ready to help. To be added or deleted, email newsletter@arlingtonforestva.org.



Pet sitting



Plant watering



Mother's helper



Mail collection

★
Special
Certification

	Name	Email	Phone									Other
Southside	Sophia Cordon	kitkat67@msn.com	301-509-7915	✓	✓		✓		✓	✓	✓	
	William Cordon		301-509-7915	✓	✓				✓		✓	Yard help
	Amy Mashkuri		571-643-5883	✓	✓							
	Sabrina Saunders	sabrina_saunders@icloud.com	202-531-2247	✓	✓		✓*			✓	✓	Tutoring
	Brooks Everitt	Ang.everitt12@Gmail.com	571-244-7691	✓	✓				✓		✓	
	Alexis Kent	alexisvkent@gmail.com	703-899-5395				✓					
	Gavin Kraft	kenneth.d.kraft@gmail.com	314-775-7008	✓	✓	✓		✓	✓	✓	✓	
	Nora Kraft	kenneth.d.kraft@gmail.com	314-775-7008	✓	✓					✓	✓	
	Madeline Lund	madelinelund11@gmail.com	571-447-6968	✓	✓		✓			✓		
	Avery McGrann	snooz_ette@yahoo.com	571-225-2484	✓	✓		✓*			✓	✓	
Greenbrier	Cece McGrann	snooz_ette@yahoo.com	703-489-7170	✓	✓		✓*			✓	✓	
	Anna McLaughlin	annamc1012@yahoo.com	571-550-1680	✓	✓		✓*		✓		✓	
	Jacob Nadherny	jacob@nadherny.com		✓	✓						✓	
	Matthew Petruccelli	tony.petruccelli@gmail.com	703-629-0425			✓		✓				
	Nicky Petruccelli	tony.petruccelli@gmail.com	703-629-0425			✓		✓	✓		✓	
	Caulder Pickard	katiepickard@gmail.com	571-244-6870	✓	✓	✓		✓	✓	✓	✓	
	Elle Pickard	katiepickard@gmail.com	571-244-6870	✓	✓		✓*		✓	✓	✓	
	James Smialowicz	james.smialowicz@gmail.com	703-244-6564	✓	✓	✓		✓	✓		✓	
	Ben Tahu	Ben.apple.sub@gmail.com	571-289-6272		✓						✓	
	Koh Tamaki	michaelnakamoto@gmail.com	703-568-8566			✓		✓				Mowing
Northside	Thomas Walsh	tvswalsh22@gmail.com	202-236-4953	✓		✓	✓	✓	✓	✓	✓	
	Lila Bryant	lila.k.bryant@icloud.com				✓		✓		✓		
	Natalie Bryant	natalie.a.bryant@icloud.com	703-447-8555		✓		✓		✓			
	Niittisha Choudhary	Niittisha@gmail.com	703-981-1229	✓			✓		✓			Tutoring
	Ella Engelhardt		571-236-8123		✓		✓*			✓		Dog training
	Rafaella Lenco	rafaellalenco@gmail.com	571-279-9875	✓	✓				✓		✓	
	Mariah Nissenson	manissenson@gmail.com	703-517-1037	✓	✓		✓*		✓	✓	✓	
	Matthew Pearl	matthewpearl07@gmail.com	571-531-2348			✓		✓	✓		✓	
	Evie Price		703-402-5138	✓	✓		✓*		✓	✓	✓	
	Adam Sherzai	adam.sherzai@icloud.com	202-615-9411	✓	✓	✓	✓	✓	✓	✓	✓	
Leilani Wright		207-650-5741	✓	✓	✓		✓	✓	✓	✓	Tutoring	
	Name	Email	Phone									Other



Visit us in the
**Arlington Forest
Shopping Center**

Our coffee is a locally roasted,
direct-trade specialty coffee from
Guatemala

20% off Any Purchase

Including our signature
dirty horchata drink

Also try our breakfast sandwiches
and lunch options!

Not valid with other offers,
coupon expires November 15, 2024

Outdoor seating
available!



R & M CLEANING SERVICES

Reliable - Experienced - Good References
Flexible Scheduling - Reasonable Rates
We Bring Our Own Equipment

Call **MARYEN or RAUL**

703-321-5335

Free-in-home
Estimate --

Weekly/Bi-weekly/

Monthly or Occasionally --

Move-in or Move-out Office



Help Neighborhood Schools

Link your **Harris Teeter VIC cards** to help your neighborhood and local schools that many of our children attend!
Choose up to five different schools to link to, then hand this page to the customer service desk during your next visit to Harris Teeter.

Barrett: 3906	Barcroft: 4238	ATS: 4378	Key: 5109	H-B Woodlawn: 4490	Thomas Jefferson: 3905
Kenmore: 3954	Washington-Liberty: 3917	Wakefield: 4566	St. Thomas More: 2069	Our Savior Lutheran: 5529	

Inflation is cooling – and that’s a good sign for mortgage rates. As the rate of inflation gets closer to the Fed’s target of 2%, they may lower the Federal Funds Rate. When they do, mortgage rates are likely to respond. But this isn’t the only factor at play. For the latest updates on what’s happening, follow me. How can I help with your unique situation? Put my 39 years of experience to work for you! **Casey O’Neal, Compass Real Estate, 703-217-9090**



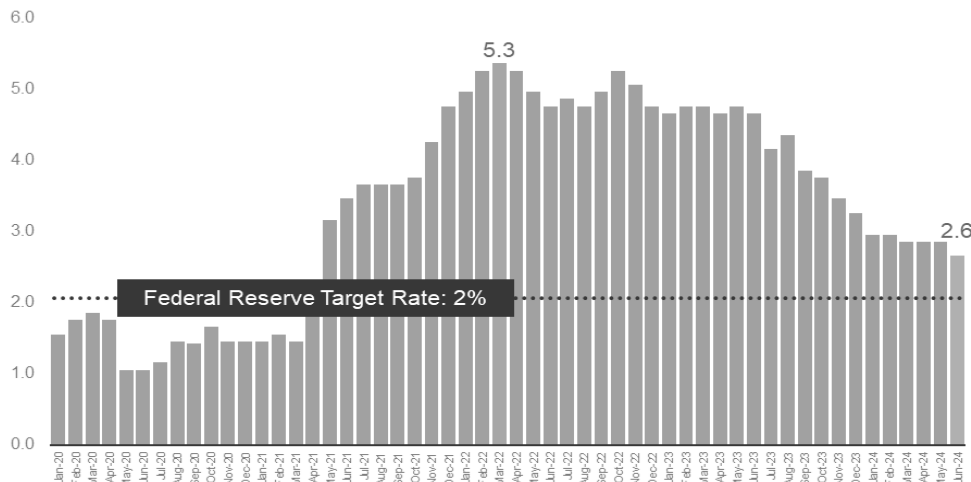
Casey O'Neal
Associate Broker
703-217-9090
casey@caseyoneal.com
www.caseyoneal.com
Compass Real Estate

FREE Notary Service
for Arlington Forest
Residents!

With my guidance as a project manager, I can help you prepare your home to sell faster and at a higher price. **Compass fronts the cost of the services** to enhance your home’s value. Visit our web site for details.

Inflation Is Trending Toward 2%

Core Personal Consumption Expenditures (PCE) Price Index
(Percent Change Year-Over-Year, Seasonally Adjusted)



New Forest Valet

Quality Cleaning Since 1967

Drycleaning - Laundry - Shoe Repair

Alterations - Draperies - Quilts

Specializing in Delicate
and Fancy Items

Arlington Forest Shopping Center

703-525-4354

7 to 7 Mon-Fri, 9-3 Sat

**"Fussy Cleaning for
Nice People"**

BROOKE RENTAL center®

Tents • Catering Equipment • Party
Supplies • Lawn and Gardening
Equipment • Power Tools • Medical
Equipment

Arlington • (703) 243-2122
4831 1st St North, Arlington VA 22203

BrookeRentalCenter.com



Brick's Pizza

16 Years of Great Pizza

703-243-6600

Cheese 12" - \$14, \$0.99/topping

Cheese 14" - \$17, \$1.49/topping

Cheese 16" - \$19, \$1.99/topping

**On Tuesdays:
Buy one pizza,
get one free**

Arlington Forest Shopping Center
Hours: 10 am - 11pm Sun - Thurs
10 am - 12 am Fri - Sat



CRYSTAL THAI
Distinctive & Aroma Thai Cuisine

4819 1st Street North
Arlington, VA 22203

(Arlington Forest Shopping Center)

Tel: 703-522-1311

www.crystalthai.com

Dine-in Pick-Up Delivery

**Fine Food
Fine Service
Fine Neighbors**

Buy One Get One \$7 Off!

Get \$7 off one Lunch or Dinner
Entree when purchasing a
Second Lunch or Dinner Entree
Of Equal or Greater Value

**Good Daily for
Arlington Foresters
With This Coupon
For Dine-in Only**

One Coupon per Party
Not Valid with Luncheon Specials,
Soft Shell Crab and Crispy Flounder
Menu, any Special of
Maximum Discount \$7

Coupon expires November 15, 2024
We honor all Major Credit Cards

Javikan

(Yes We Can!)


**Yard Care * Powerwashing
Glass Recycling * Odd jobs**



*Staffed with
Young Adults
with Disabilities*

703-585-4946

Javikan123@gmail.com

Our Savior Lutheran School

Arlington, VA

Pre-K (Age 4 by Sept.30)
through 8th grade

Affordable Tuition

Before and After School Program

Small Class Sizes

Many Extracurricular Activities

825 SOUTH TAYLOR STREET

ARLINGTON, VA 22204

703-892-4846

WWW.OSVA.ORG